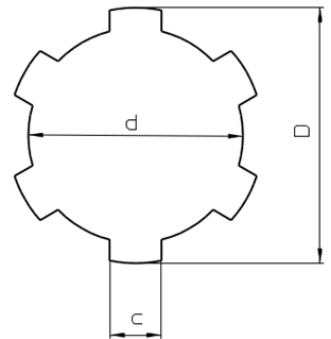


Splined Shafts

Alberi Scanalati

Cold drawn - Trafilati a freddo

D	d	c	Z (Teeth Nr.)	kg/m
14	11	3	6	0,95
16	13	3,5	6	1,29
20	16	4	6	1,91
22	18	5	6	2,45
25	21	5	6	3,14
28	23	6	6	3,96
28,52	23,65	7,03	6	4,25
30	26	6	6	4,64
32	26	6	6	5,01
34	28	7	6	5,82
34,87	28,14	8,64	6	6,72
38	32	6	8	7,43
42	36	7	8	9,30
44,37	36,25	11	6	10,13
48	42	8	8	12,37
54	46	9	8	15,30



Dimensional Tolerances

Tolleranze dimensionali

sec. disegno

Available materials

Qualità disponibili

C45

42CrMo4

W.N. 1.4301